

Your First Line Of Defense Against Fire

PYRODETEC®

Automatic Fire Suppression System

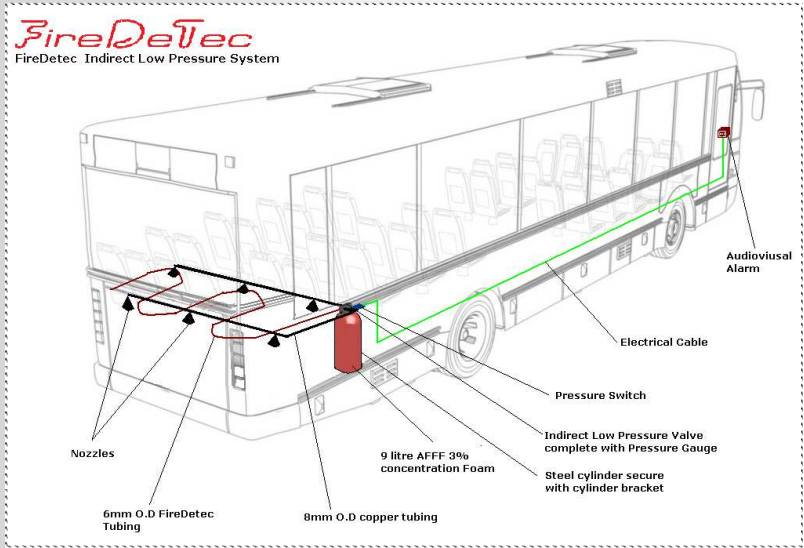
Detect and Suppresses **Fire** within seconds



PYRODETEC®

Fire detection and extinguishing system with linear detection

PROTECT YOUR VALUABLE ASSETS COST EFFECTIVELY

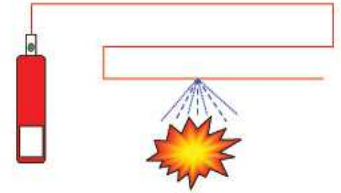


PyroDetec Automatic Fire Suppression System

Direct Low Pressure (DLP)

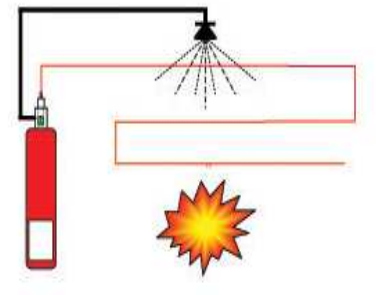
The **Direct Low Pressure System** (DLP) utilized the PyroDetec tubing as both fire detection as well as delivery system for the fire suppressant.

The portion of the tube nearest to the fire will rupture with a nozzle-like opening. The pressure drop in the tube causes the release of the suppressant from the cylinder through this opening.



Indirect Low Pressure (ILP)

For **Indirect Low Pressure System**, the PyroDetec tubing act just as a fire detection device. The fire suppressant is delivered through copper, brass or stainless steel tubing. Once the PyroDetec tubing rupture, the suppressant is discharged through several strategically placed nozzles within the protection enclosure.



High Pressure System

This line of product is available in both Direct and Indirect system. It allow for delivery of high pressure suppressant such as CO₂.

Applications



Electrical and Control Panel

Electrical relay panel, control panel, Switch gears, Data storage panel, Process control Panel.



Biomedical and Chemical

Fume Hood, chemical storage, Laboratory.



Heavy Equipment

Heavy machinery plant, CNC Forklifts, Cleaning machinery involving flammable solvent.



Engineering Industries

machines, Milling machines EDM machines, Robotic welding machines.



Commercial fleet & Alternative fuel vehicle

Buses, CNG vehicle, Mass Transit, Light rail.



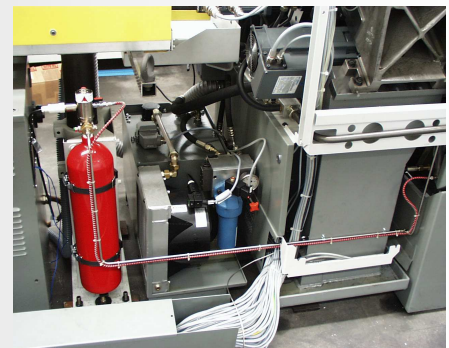
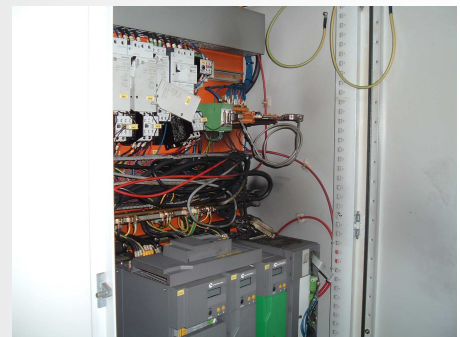
Isolated Installation

Mobile phone site, Oil rig control, Radio, TV & Satellite transmitter/ Receiver.

Kills fire before it gets bigger

References

- AE STALEY - Process Control Cabinets
- BJ Services - Off-shore drilling equipment
- Black & Decker - Plastic injection molding plant
- Bocm Pauls - Electrical switch gear
- British Gas - Offshore Rig
- British Nuclear Fuel - Fume Cabinets
- Caterpillar - Parts Testing machines
- Chester Zoo– Electric Drive motor & Switch gear
- Chevron Petroleum Niniam Platform - Fire Deluge Control
- CONOCCO - Offshore Rig
- Exxon Mobile - Engine Test Bay
- GB Glass Beer - Process Control Panel
- Gividan Rohr - Fume Cabinets
- Glaxo Smith Klein - Fume Cabinets
- ICI Zeneca Pharmaceuticals - Fume Hood
- London Electric - Computer & Electrical switch gear
- London Stock Exchange - Transformer enclosure
- Merck Plant - Chemical storage
- Mobile Oil - Petroleum Production Plants
- Pfizer - Process control panel
- New Skies Network - Satellite Control panel
- Sanvic - CNC & Milling machines
-and many more.....



Nanokool Pte Ltd
16L Enterprise Road
Enterprise 10
Singapore 627660
Tel : 6665 9456
Fax: 6899 2139

Contact: Johnny
Mobile : 90889800